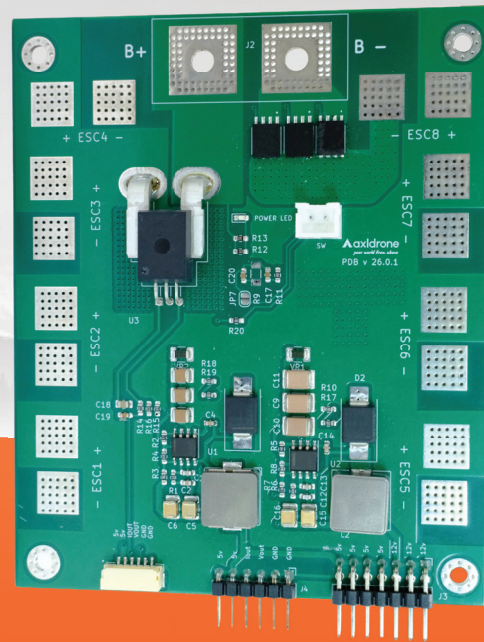


# Precision Power Delivery. Industrial Reliability.



## PDB 400A

The axldrone PDB 400A is a professional-grade power distribution board built for heavy-lift drone platforms and high-power systems. Compact and efficient, it delivers stable and organized power to ESCs, onboard electronics, etc. Designed for dependable operation, it ensures consistent performance in demanding flight environments

### Key Features



#### 400A Continuous Current Support

Handles up to 400A distributed load for high-power UAV systems



#### 8 × 60A Output Pads

High-current solder pads for reliable multi-motor power delivery.



#### Integrated Current Sensing

Built-in Hall-effect sensor for real-time power monitoring.



#### Dual 5V & 12V BEC Outputs

Regulated outputs for flight controllers and onboard electronics.



#### Soft Power Switching

MOSFET-based design for controlled and safer startup.



#### Dedicated FC JST Power Ports

Simplified flight controller power connection.

# Applications

## Heavy-lift octocopters



## High-power robotics



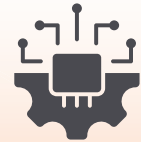
## Autonomous ground vehicles



## Industrial UAV platforms

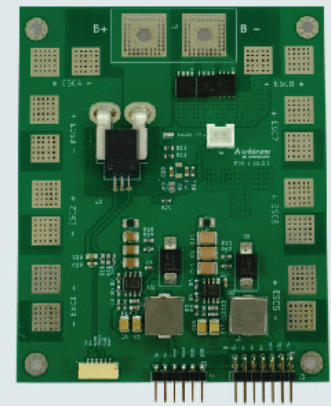


## Embedded systems



## About axldrone

axldrone is a leader in innovative drone solutions, offering purpose-built drones, powerful components, and ground control software. With over a decade of R&D and global project execution experience, we provide end-to-end drone solutions for professional and industrial uses.



[www.axldrone.com](http://www.axldrone.com)



### axldrone

Digital Hub, Kerala Technology Innovation Zone, Kinfra Hi-Tech Park, Kalamassery, Kochi, Kerala 683503  
Ph: +91 949 771 7654



### Global R&D and Export

Ph : +91 949 771 7654  
E : info@axldrone.com

C5, UL Cyberpark, SEZ, Calicut, Kerala, 673 016

### Global Sales and Support

Ph : (646) 260-6311  
E : info@axldrone.com

1441 Broadway, #5, New York, NY 10018

