

# PDB 200A - Quick Start Guide

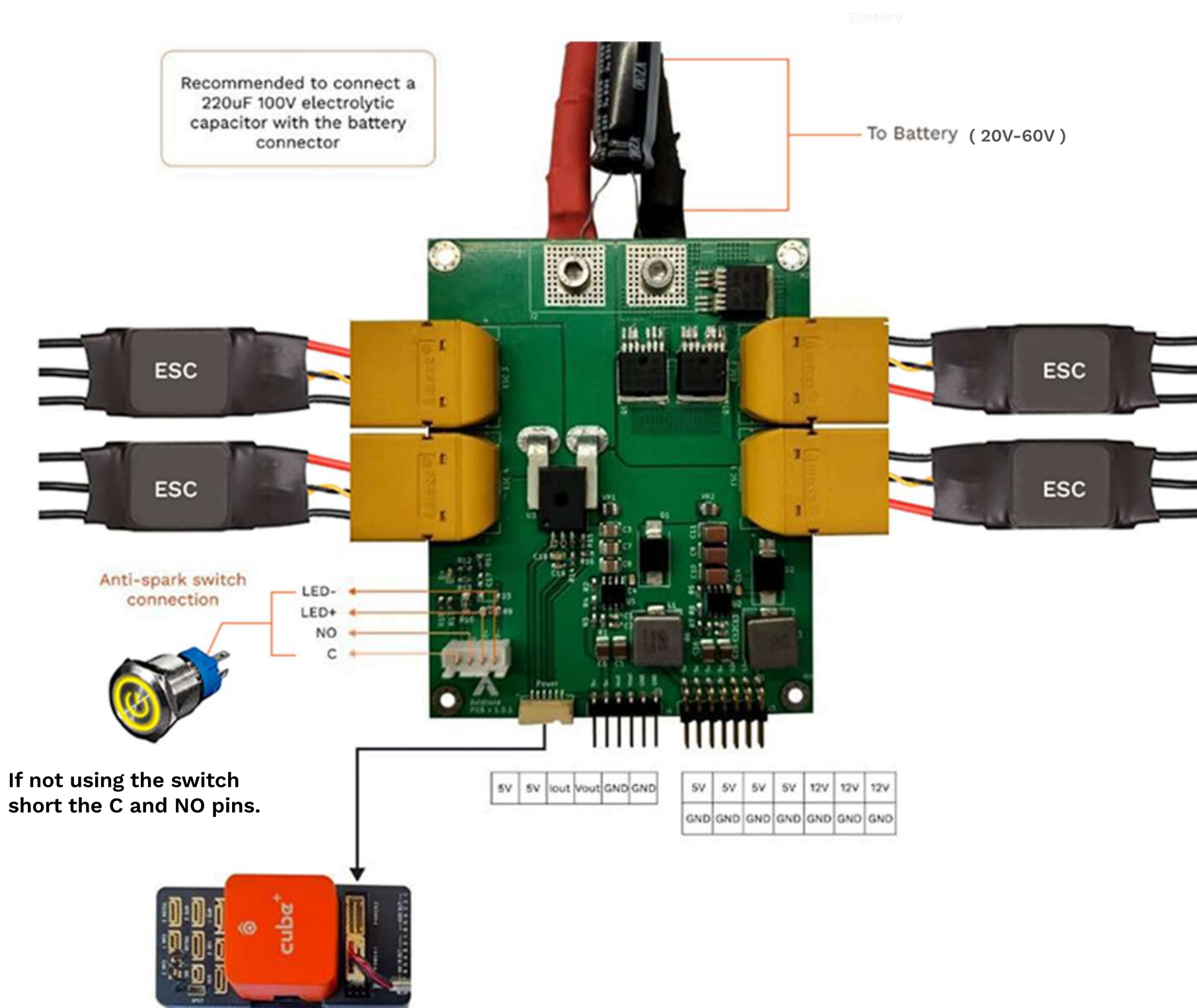
## Package Contents:

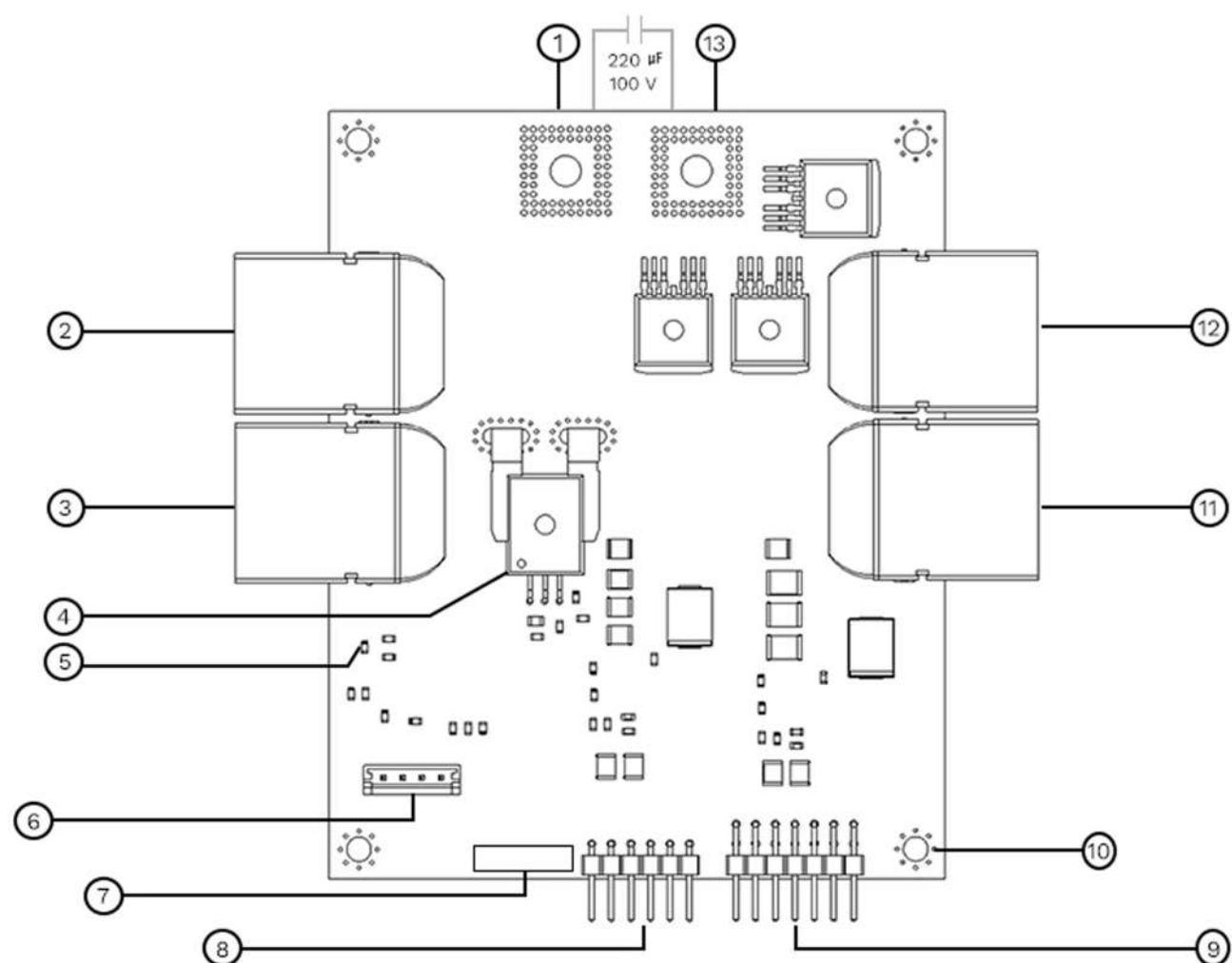
1\* PDB 200A Module

1\* 220  $\mu$ F 100V Capacitor

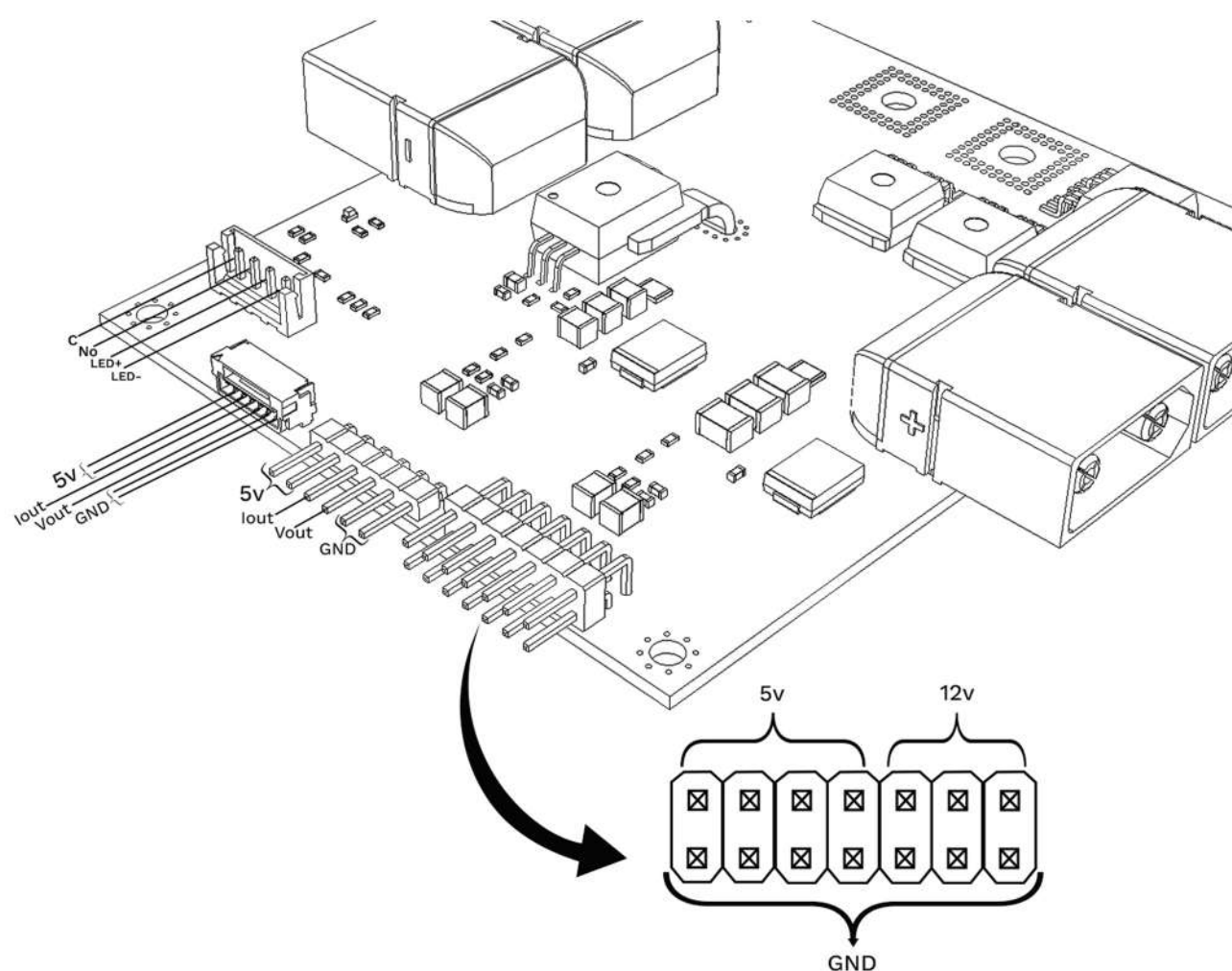
## Installation:

- Input Power: Solder battery leads to input pads with a parallel 220  $\mu$ F 100V Capacitor.
- ESC Connections: Connect each ESC connectors (XT90M) to the ESC Connector (XT90F)
- Connect 4 pin JST connector to switch (with in built LED)
- Connect 6 pin JST connector power output to Flight controller
- BEC Outputs: Use the regulated 5V or 12V outputs to power cameras, air units, and other on board peripherals.





- |                              |                              |
|------------------------------|------------------------------|
| 1 Battery +ve                | 9 Double Row Male Header Pin |
| 2 XT90 ESC3                  | 10 Mounting Hole             |
| 3 XT90 ESC4                  | 11 XT90 ESC 1                |
| 4 Current sensor             | 12 XT90 ESC 2                |
| 5 Power LED                  | 13 Battery -Ve               |
| 6 JST 4 Pin Connector        |                              |
| 7 JST 6 Pin Connector        |                              |
| 8 Single Row Male Header Pin |                              |



### Mounting Recommendation:

Secure the PDB using non-conductive standoffs or insulation spacers to prevent shorts.

**Caution:** Check polarity before soldering. Incorrect wiring can cause permanent damage.