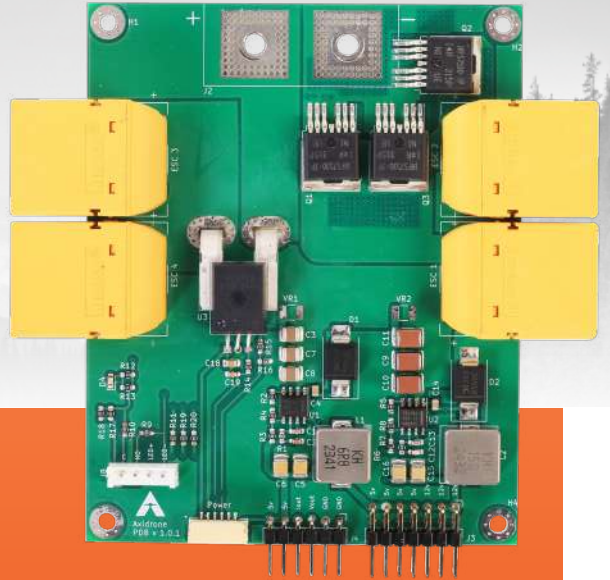


# Simplify Your Wiring With axl's Power Distribution Board



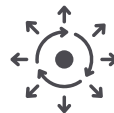
## axl PDB200A

This high-current Power Distribution Board is engineered for demanding electronic systems requiring up to 60 V input (compatible with 14S LiPo). It supplies stable, regulated 12 V and 5 V outputs at 5 A each, while its anti-spark soft-switch enables smooth, spark-free power-ups in inductive environments. Featuring four XT90 connectors that support up to 200 A total, the board also integrates Hall-effect current and voltage sensors, providing real-time analog telemetry.

### Key Features



High-Performance Power Handling (up to 200A)



Optimized Power Outputs (4xXT90 connectors)



Compact & Lightweight



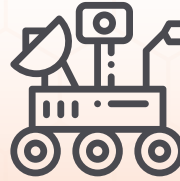
Compatibility (Pixhawk, Cube Orange)

## Applications

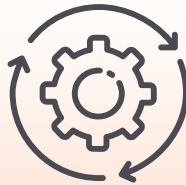
### Electric Vehicles



### Robotics



### Industrial Automation



### UAVs & Aerial Platforms



**Additional  
components  
are available  
on request**

## About axldrone

axldrone is a leader in innovative drone solutions, offering purpose-built drones, powerful components, and ground control software. With over a decade of R&D and global project execution experience, we provide end-to-end drone solutions for professional and industrial uses.



### axldrone

Digital Hub, Kerala Technology Innovation  
Zone, Kinfra Hi-Tech Park, Kalamassery,  
Kochi, Kerala 683503  
Ph: +91 484 299 3399, +91 949 771 7654

### Global R&D and Export

P : +91 8697419820  
E : [info@axldrone.com](mailto:info@axldrone.com)

C5, UL Cyberpark,  
SEZ, Calicut, Kerala, 673 016

### Global Sales and Support

P : (646) 260-6311  
E : [info@axldrone.com](mailto:info@axldrone.com)

1441 Broadway,  
#5, New York, NY 10018

